	. SHENZHEN PENGCHU INDUSTRY CO., LTD	DATE: 2017-12-1	PRCD.	CHED.	APPD
	<b>NAME</b>	<b>PC-240050</b>			

# 承认书

## SPECIFICATION FOR APPROVAL

APPROVAL SIGNATURE
DATE:

承认记事 This approval is drawn in duplicate in the English and Chinese languages ,both two texts being equally

REMARKS Authentic.In case of any diverpence of interpretation, the China text shall prevail

本承认书用中文和英文两种字体写成，两种文本均为正本.但在对其解释产生异议时，以中文文本为准。

客户名称

CUSTOMER \_\_\_\_\_

物料代号                      设计编号


PART No. \_\_\_\_\_ DESIGNED NO. \_\_\_\_\_

机种型号              **PC-240050** 名                                      ADAPTER

MODEL No. \_\_\_\_\_ DESCRIPTION \_\_\_\_\_

PLEASE SIGN AND RETURN ONE COPY.

With your signature, you agree that all contents in this approval sheet are correct and all production units will be built according to the specification described in this sheet.

	. SHENZHEN PENGCHU INDUSTRY CO., LTD.	DATE: 2017-12-1	PRED.	CHED.	APPD
	<b>NAME</b>	<b>PC-240050</b>			

## 深圳市鹏楚实业有限公司


地址：深圳市龙华区大浪三合新村瑞兴科技园 A 栋 B 座 4 楼 Add.: 4F B# Bld. A, Ruixing Tech. Park, Sanhe vil., Dalang St., Longhua dist., Shenzhen, China

Tel.: 0086-0755-2377 3270 Fax.: 0086-0755-82138700

网址: <http://www.szpcsy.cn>

## CONTENTS/目录

1. Scope /范围-----	Page4
2. Application /应用-----	Page4
3. Safety Standard /安规标准-----	Page4
4. Input Characteristic /输入特性-----	Page5
5. Output Characteristic /输出特性-----	Page6
6. Dielectric withstand (Hi-pot) test /绝缘介电强度(耐压)-----	Page6
7. Protection Feature /保护特性-----	Page6
8. Environmental Conditions/环境条件-----	Page6
9. LED /发光二极管-----	Page8
10. Testing Standard /测试标准-----	Page8

	. SHENZHEN PENGCHU INDUSTRY CO., LTD.	DATE: 2017-12-1	PRED.	CHED.	APPD
	<b>NAME</b>	<b>PC-240050</b>			

11. Major Measure Equipment /主要测量设备----- Page9

12. Case outside /外壳尺寸-----Page10,11

13. DC Cable /DC 线-----

Page12

14. Mark the picture /铭牌图----- Page13


15. Appearance diagram /电源外观----- Page13

16. Packing the diagram /包装图----- Page14

17. Sample Test Report /样品测试报告----- Page15

## Modification History/变更记录

Rev/版本	Date/日期	Originator/负责人	Description/描述

	. SHENZHEN PENGCHU INDUSTRY CO., LTD.		DATE: 2017-12-1	PRED.	CHED.	APPD
	<b>NAME</b>	<b>PC-240050</b>				

**1. Scope: /范围:**

This document contains both general customer requirements, qualification requirement and those specific electrical and mechanical requirement for this part.

此文档中包含了常规客户的质量要求以及特定的电子和机械要求。

**2. Application: /应用:**



. SHENZHEN PENGCHU  
INDUSTRY CO., LTD.

DATE: 2017-12-1

PRED.

CHED.

APPD

**NAME**

**PC-240050**

The switching power unit, with D.C cord output plug, (AC Cord or AC Plug custom by your customer inquiry), provides DC power only to Customer's product.

此开关电源适配器，含 DC 输出插头（AC 电源线或 AC 插脚按客户要求提供或客户自配），为客户产品提供直流电源

### 3. Safety Standard:/安规标准:

The power supply shall be certified by the following international regulatory standards:

电源应符合下列国际标准:

	Country/国家	Certified Status/认证状况	Standard / 标准
	美国	UL	UL60950
	美国	FCC	Part15

### 4. Input Characteristic/输入特性:



**NAME**

**PC-240050**

**4.1 AC input voltage rating:** 100VAC to 240VAC.

额定输入电压: 100Vac 到 240Vac.

**4.2 AC input voltage range:**90VAC to 264VAC.

输入电压范围: 从 90Vac 到 264Vac.

**4.3 AC input frequency :** 50/60Hz.

输入频率:50/60Hz.

**4.4 Input current:** 0.7max.

输入电流:0.7 A 最大值.

**4.5 Inrush current:** 50A max. for 110V/60Hz at cold start (25°C).

浪涌电流:在冷开机条件下, 最大不超过 50A(输入条件 110V/60Hz).

**4.6 Efficiency:**88% (Min.) at 220VAC/50Hz input with full load.

效率: 最小值 88%(220V AC 输入和满载条件)。

**5. Output Characteristic: /输出特性:**

RATED OUTPUT 额定输出: 12VDC 5A	SPEC. LIMIT / 规格限定		REMARK / 备注
Output Voltage(unload)输出电压 (空)	23.5VDC	24.5VDC	Tolerance:±5%
Output Voltage(Full Load)输出电压 (满)	23.5VDC	24.5VDC	Tolerance:±5%
Output Current 输出电流	0A	5A	
Rate load cold ripple (CC mode)冷态纹波(定电容模式)	—	≤240mV	输出端并联 10uF 电容时 104 两宽电容
Over-Current Protection/过电流保护	—	≤3A	



**NAME**

**PC-240050**

## 6. Dielectric withstand (Hi-pot) test: /绝缘介电强度(耐压)测试:

Primary to Secondary AC1500V, 5mA max., 1 minute for type test, AC 1500V 3 second for production.

一次侧对二次侧: AC1500V, 最大 5mA, 标准测试 1 分钟, 量产测试 1500V 3 秒钟。

## 7. Protection Feature / 保护特性

### 7.1 Over-Current Protection: /过电流保护:

The power supply shall be protected when any output operating in overload condition. Under any line condition for an indefinite period of time. The power supply shall be self-recovery when the fault condition is removed.

在任何时候任何输入条件下,当输出过载时, 电源供应器将进入保护模式, 当故障被移走后, 电源要能自动恢复到正常。

### 7.2 Short-Circuit Protection: /输出短路保护:

The power supply shall be protected when any output operation in circuit short condition. The power supply shall be Auto restart when the fault condition is removed.

在任何时候任何输入条件下, 当输出操作在短路情况下, 电源供应器将进入保护模式, 当故障消失后, 电源要能自动恢复正常。

### 7.3 Over-Temperature Protection: /过温保护:

The power supply shall be protected when the temperature higher then the IC thermal shutdown temperature. After the temperature less then the IC thermal shutdown temperature. The power supply shall be self-recovery.

当适配器工作较长一段时间.工作温度超过 IC 的最高工作温度时. 电源供应器将进入



**NAME**

**PC-240050**

过温保护模式.停止工作. 当工作温度下降一定时电源将能自动恢复正常工作.

## 8. Environmental Conditions: / 环境条件:

### 8.1 Operating: /操作条件:

The power supply shall be capable of operating continuously in any mode without performance deterioration in the following environmental conditions.

在下列环境条件下, 电源供应器要能够连续操作在各种模式, 且不能造成性能的退化。

### 8.2 Operating Temperature:0°C~40°C ;

操作温度: 0°C~40°C

### 8.3 Relative Humidity:10%~90%;

相对湿度: 10%~90%

### 8.4 Vibration: 1.0mm,10-25Hz,15 minutes per cycle for each axis (X,Y,Z)

将电源供应器沿着(X,Y,Z)任意三个面振动 15 分钟 (振动测试参数:

振幅 1.0mm, 频率 10-25Hz) 。

### 8.5 Cooling: The power supply will operate with convection cooling. Blocking of vents must not cause damage to the power supply.

电源供应器将操作在对流冷却的环境下, 即使将通风口阻塞电源也不允

许有任何损伤发生。

### 8.6 NON-Operating: /非操作条件:





**NAME**

**PC-240050**

The power supply shall be capable of withstanding the following environmental conditions extended periods of time, without sustaining electrical or mechanical damage and subsequent operational deficiencies:

电源供应器要能够长期的经受下列的环境条件，且不允许有电气及机械方面的损伤和并发的操作的缺失。

**8.7 Storage Temperature:-20°C~70°C**

存储温度： -20°C~70°C

**8.8 Relative Humidity:10%~90%**

相对湿度： 10%~90%

**8.9 Vibration and Shock ; 振动和冲击**

The power supply shall be designed to withstand normal transportation vibration per MIL-STD-810D, method 514 and procedures X, as it is mounted in the chassis assembly and packed for shipping.

电源供应器装配及出货的包装设计，均要承受正常运输的振动，并符合

MIL-STD-810D 方法 514 和程序 X。

**9. LED / 发光二极管**

φ3, 高亮绿光

**10. Testing Standard: / 测试标准:**

Describe 描述	Model 模式	Output Current 输出电流	Output Voltage 输出电压	Bicolor LED 发光二极管颜色



. SHENZHEN PENGCHU  
INDUSTRY CO., LTD.

DATE: 2017-12-1

PRED.

CHED.

APPD

**NAME**

**PC-240050**

Output Voltage(No Load)

CC model

0A

23.5-24.5VDC

Green/绿色

输出电压 (空载)

定电容模式

Output Current

CC model

5A

23.5-24.5VDC

Green/绿色

输出电流

定电容模式

### 11. Major Measure Equipment: / 主要测量设备:

- A. AC SOURCE / 交流输入电源: 华仪 6205-300W
- B. POWER METER / 电源功率计: RF9800
- C. ELECTRONIC LOAD / 电子负载: M9711
- D. OSCILLOSCOPE / 存储示波器: TBS1102
- E. DIGITAL MULTIMETER / 数字万用表: VC9807A
- F. DC POWER / 直流输入电源: RK3030DS
- G. HI-POT TESTER / 耐压测试仪: 华仪 7110
- H. HYBRID RECORDER / 混合记录仪: YOKOGAWA DR130



. SHENZHEN PENGCHU  
INDUSTRY CO., LTD.

DATE: 2017-12-1

PRED.

CHED.

APPD

**NAME**

**PC-240050**

I. CONS. T/H SIMULATOR / 恒温恒湿仪: TH-A4H 1-150

J. INSULATION RASISITANCE TESTER / 绝缘电阻表: 华仪 7410

**12. Case outside:/ 外壳尺寸:**



. SHENZHEN PENGCHU  
INDUSTRY CO., LTD.

DATE: 2017-12-1

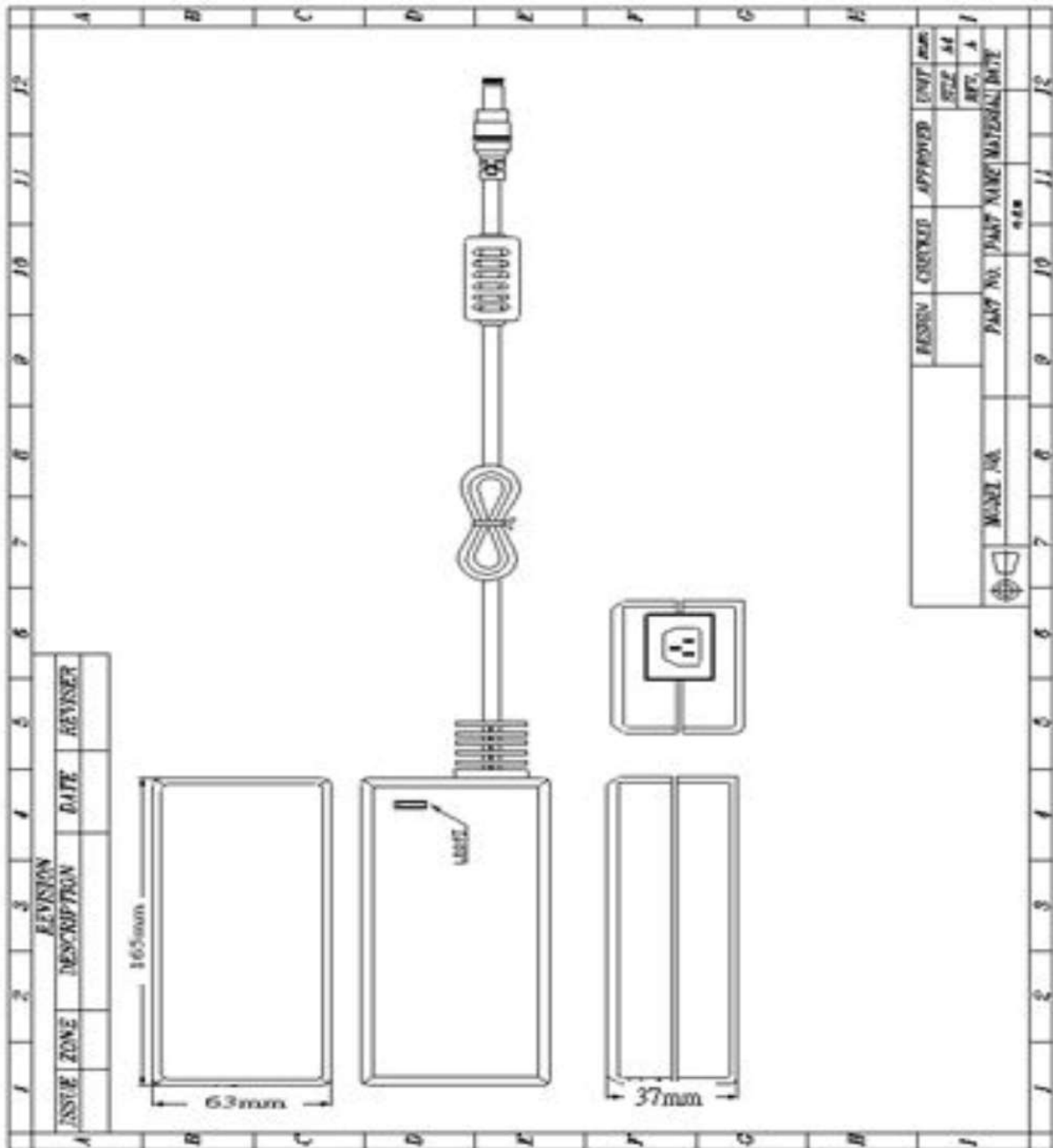
PRED.

CHED.

APPD

**NAME**

**PC-240050**



**13. DC Cable:/DC 线:**

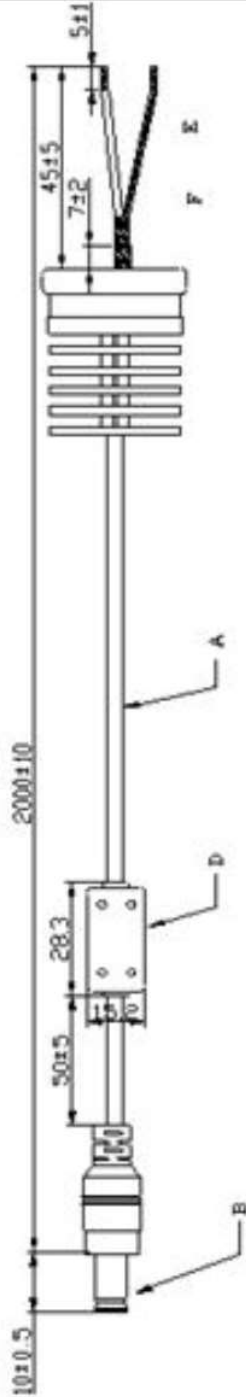


**NAME**

**PC-240050**

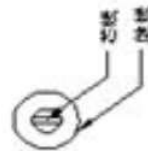
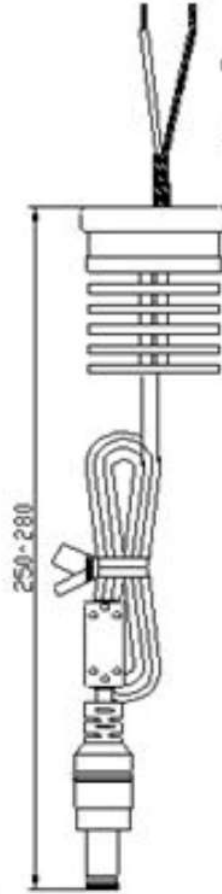
NO	REVISION	DWN	DATE
1			
2			

Unit:mm



Packing

drawings



LIST	DESIGNATION	SPECIFICATION	COLOR	QTY
F	热缩管: φ3.5*10mm		black	1PCS
E	热缩管: φ1.0*5mm		black	1PCS
D	Magnet: φ5.5*12.5*20mm		black	1PCS
C	SR.72*φ.5*10mm		black	1PCS
B	DC φ5.5*φ1.0*10mm lock use of straight black 垂直自锁带磁环		黑色	1PCS
A	UL 20AWG 正标, 线径185		black	1980

APPER	CHE	CK	DRWG	MODEL:	CUST P/N

序号	描述标准	版本

变更内容	版本

F.O.NO:	DATE:



. SHENZHEN PENGCHU  
INDUSTRY CO., LTD.

DATE: 2017-12-1

PRED.

CHED.

APPD

**NAME**

**PC-240050**

**14. Mark the picture: /铭牌图:**

单位: mm

待定

**15. Appearance diagram: /电源外观:**





. SHENZHEN PENGCHU  
INDUSTRY CO., LTD.

DATE: 2017-12-1

PRED.

CHED.

APPD

**NAME**

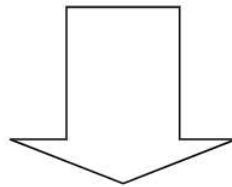
**PC-240050**

### 16. Packing the diagram: /包装图:

单位: mm

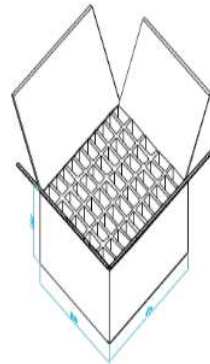
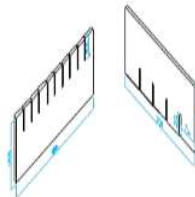


Packing with PE bag;  
成品外包 PE 袋.



Dimension: 尺寸

1. 440\*165\*3mm,
2. 390\*165\*3mm



QTY/Carton: 数量/外箱

50PCS, 10\*5\*1;

Carton Dimension: 外箱尺

寸

450\*400\*180mm.\*5mm



. SHENZHEN PENGCHU  
INDUSTRY CO., LTD.

DATE: 2017-12-1

PRED.

CHED.

APPD

**NAME**

**PC-240050**

**17. SAMPLE TEST REPORT / 样品测试报告**

CUSTOMER 客户		MODEL NO. 机种	PC-2400500				
DESIGNED NO 设计编号							
Test Items 测试项目	Test Condition / 测试条件	Sample quantity and test result / 样品数量和测试结果					Pas
Unload output voltage: (CC mode) 空载输出电压 (0.0A) 11.4Vdc~12.6Vdc	100Vac						pass
	220Vac						
Rated load output voltage / (CC mode) 额定负载输出电压 (3.3A) 11.4Vdc~12.6Vdc	100Vac						pass
	220Vac						pass
Rate load cold ripple(CC mode) 冷态纹波 (3.3A) <120mV	100Vac						Pass
	220Vac						Pass
AC over voltage rotection AC 过压保护 29J-330		----	----	----	----	----	----
		---	----	---	---	---	----
		---	----	---	---	----	----
Short-circuit protection test / 短路保护测试	100Vac						
	220Vac						Pass
Hi-pot/介电强度	1500Vac/5mA/ 3Minute						Pass
Efficiency /效率	>80% (A: 220V,Full load)						Pass
450V Inrush 冲击	450V full load	----	----	----	----	----	----





. SHENZHEN PENGCHU  
INDUSTRY CO., LTD.

DATE: 2017-12-1

PRED.

CHED.

APPD

**NAME**

**PC-240050**