

EC800M-CN

Reference Design

LTE Standard Module Series

Version: 1.0

Date: 2022-09-20

Status: Released



At Quectel, our aim is to provide timely and comprehensive services to our customers. If you require any assistance, please contact our headquarters:

Quectel Wireless Solutions Co., Ltd.

Building 5, Shanghai Business Park Phase III (Area B), No.1016 Tianlin Road, Minhang District, Shanghai 200233, China

Tel: +86 21 5108 6236

Email: info@quectel.com

Or our local offices. For more information, please visit:

<http://www.quectel.com/support/sales.htm>.

For technical support, or to report documentation errors, please visit:

<http://www.quectel.com/support/technical.htm>.

Or email us at: support@quectel.com.

Legal Notices

We offer information as a service to you. The provided information is based on your requirements and we make every effort to ensure its quality. You agree that you are responsible for using independent analysis and evaluation in designing intended products, and we provide reference designs for illustrative purposes only. Before using any hardware, software or service guided by this document, please read this notice carefully. Even though we employ commercially reasonable efforts to provide the best possible experience, you hereby acknowledge and agree that this document and related services hereunder are provided to you on an “as available” basis. We may revise or restate this document from time to time at our sole discretion without any prior notice to you.

Use and Disclosure Restrictions

License Agreements

Documents and information provided by us shall be kept confidential, unless specific permission is granted. They shall not be accessed or used for any purpose except as expressly provided herein.

Copyright

Our and third-party products hereunder may contain copyrighted material. Such copyrighted material shall not be copied, reproduced, distributed, merged, published, translated, or modified without prior written consent. We and the third party have exclusive rights over copyrighted material. No license shall be granted or conveyed under any patents, copyrights, trademarks, or service mark rights. To avoid ambiguities, purchasing in any form cannot be deemed as granting a license other than the normal non-exclusive, royalty-free license to use the material. We reserve the right to take legal action for noncompliance with abovementioned requirements, unauthorized use, or other illegal or malicious use of the material.

Trademarks

Except as otherwise set forth herein, nothing in this document shall be construed as conferring any rights to use any trademark, trade name or name, abbreviation, or counterfeit product thereof owned by Quectel or any third party in advertising, publicity, or other aspects.

Third-Party Rights

This document may refer to hardware, software and/or documentation owned by one or more third parties (“third-party materials”). Use of such third-party materials shall be governed by all restrictions and obligations applicable thereto.

We make no warranty or representation, either express or implied, regarding the third-party materials, including but not limited to any implied or statutory, warranties of merchantability or fitness for a particular purpose, quiet enjoyment, system integration, information accuracy, and non-infringement of any third-party intellectual property rights with regard to the licensed technology or use thereof. Nothing herein constitutes a representation or warranty by us to either develop, enhance, modify, distribute, market, sell, offer for sale, or otherwise maintain production of any our products or any other hardware, software, device, tool, information, or product. We moreover disclaim any and all warranties arising from the course of dealing or usage of trade.

Privacy Policy

To implement module functionality, certain device data are uploaded to Quectel’s or third-party’s servers, including carriers, chipset suppliers or customer-designated servers. Quectel, strictly abiding by the relevant laws and regulations, shall retain, use, disclose or otherwise process relevant data for the purpose of performing the service only or as permitted by applicable laws. Before data interaction with third parties, please be informed of their privacy and data security policy.

Disclaimer

- a) We acknowledge no liability for any injury or damage arising from the reliance upon the information.
- b) We shall bear no liability resulting from any inaccuracies or omissions, or from the use of the information contained herein.
- c) While we have made every effort to ensure that the functions and features under development are free from errors, it is possible that they could contain errors, inaccuracies, and omissions. Unless otherwise provided by valid agreement, we make no warranties of any kind, either implied or express, and exclude all liability for any loss or damage suffered in connection with the use of features and functions under development, to the maximum extent permitted by law, regardless of whether such loss or damage may have been foreseeable.
- d) We are not responsible for the accessibility, safety, accuracy, availability, legality, or completeness of information, advertising, commercial offers, products, services, and materials on third-party websites and third-party resources.

Copyright © Quectel Wireless Solutions Co., Ltd. 2022. All rights reserved.

About the Document

Revision History

Version	Date	Author	Description
-	2022-05-26	Kelly WANG	Creation of the document
1.0	2022-09-20	Kelly WANG	First official release

Contents

About the Document.....	3
Contents.....	4
1 Reference Design.....	5
1.1. Introduction.....	5
1.2. Schematics.....	5

1 Reference Design

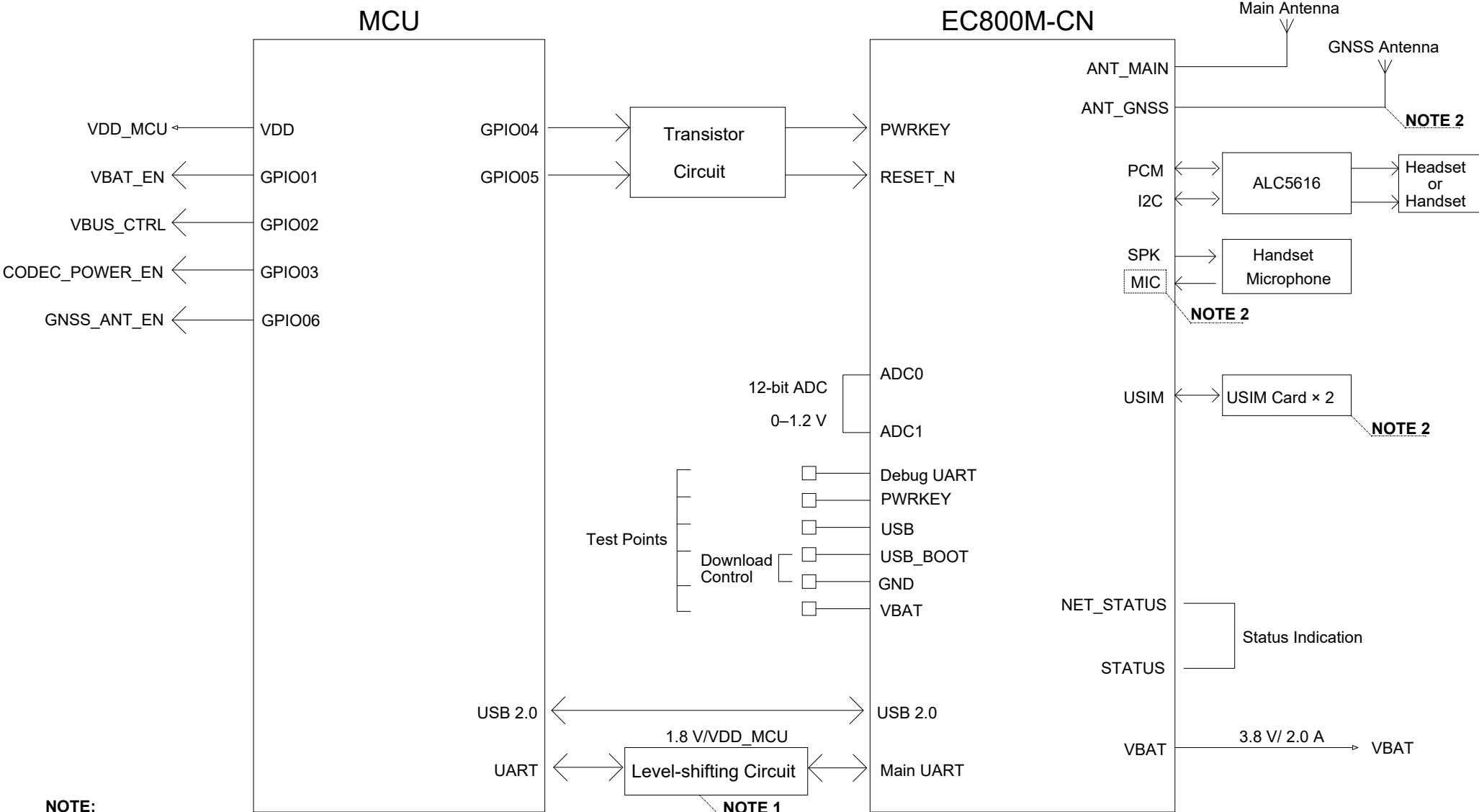
1.1. Introduction

This document provides the reference design for Quectel EC800M-CN module.

1.2. Schematics

The schematics illustrated in the following pages are provided for your reference only.

Block Diagram

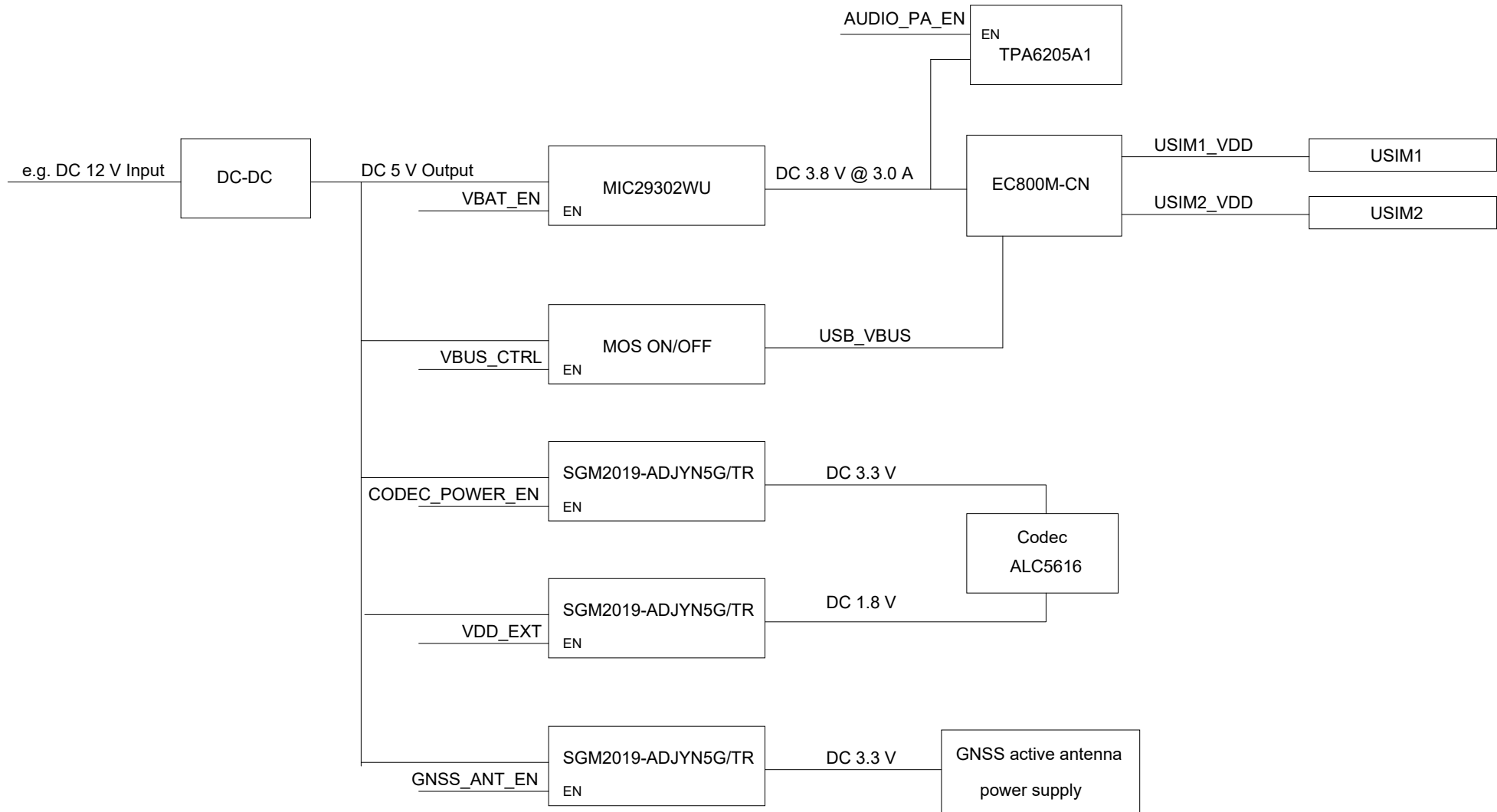


NOTE:

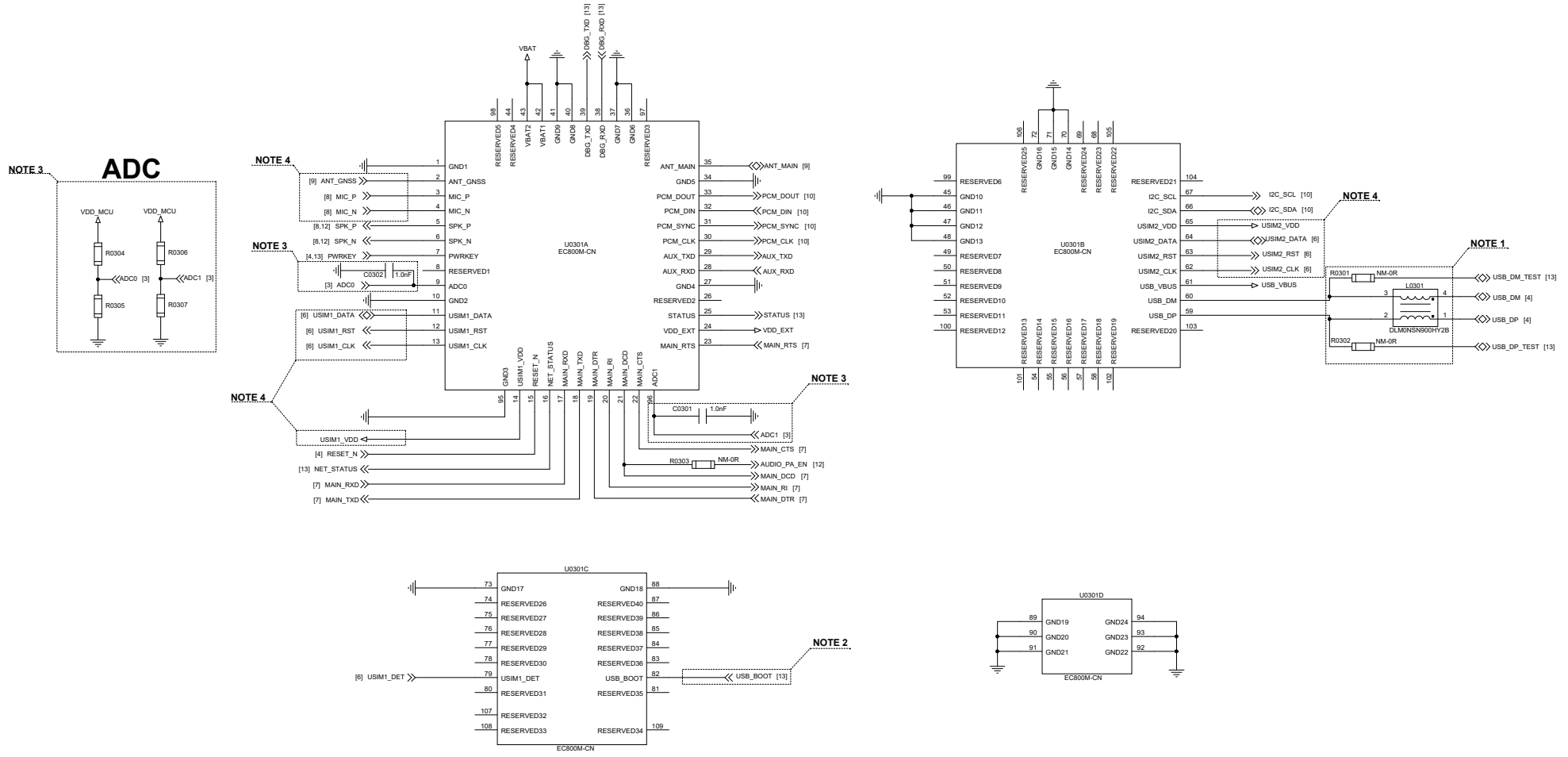
- 1. A level-shifting circuit or a voltage-level translator TXS0108EPWR provided by Texas Instruments is recommended.
- 2. GNSS function of the module is optional.
 - a) If both GNSS and analog audio input function are selected, the module requires an external microphone bias circuit. And MICBIAS must be provided with 1.8 V power supply by using a low-noise LDO. Only USIM1 interface is supported on this condition.
 - b) If GNSS function is not selected but analog audio input function is needed, the module requires no external microphone bias circuit. And dual USIM cards are supported in this situation.
- 3. PCM, I2C and analog audio functions are all optional.

Quectel Wireless Solutions			
PROJECT	EC800M-CN	VER	1.0
DRAWN BY	Kelly WANG	CHECKED BY	TIM HUANG
DATE	Tuesday, September 20, 2022	SHEET	1 OF 13

Power System Block Diagram



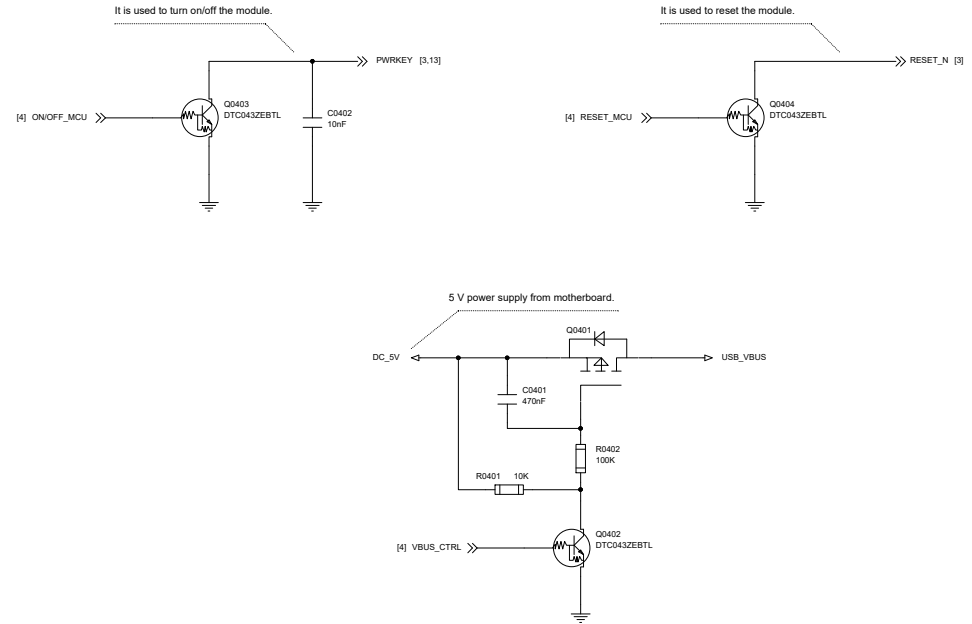
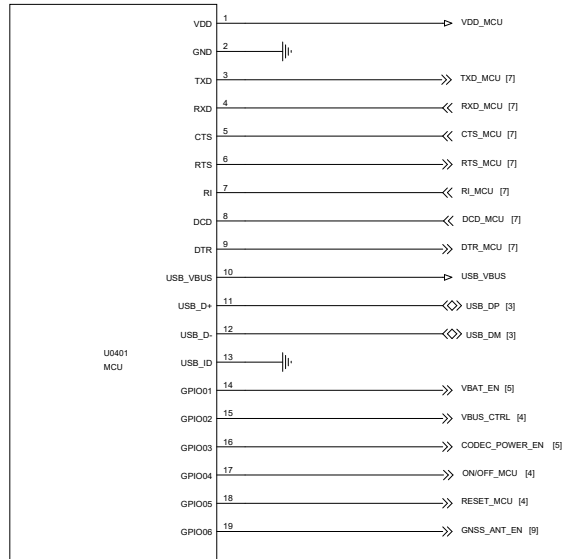
Module Interface



- NOTE:**
- A common mode choke L0301 is recommended to be added in series between the module and your MCU to suppress EMI spurious transmission, and it should be placed close to the module. Meanwhile, it is recommended to reserve the test points for upgrading the firmware over USB interface and minimize the extra stubs of the trace. The two resistors R0301 and R0302 should be placed close to the module to ensure the integrity of USB signal.
 - USB_BOOT cannot be pulled down to low level before the module starts up successfully.
 - The voltage input range of ADC0 and ADC1 is 0-1.2 V. A voltage divider with resistance of more than 100 kΩ must be used for ADC interface application. The accuracy of the two resistors in each voltage divider affects the sampling error of the ADC. It is recommended to use resistors with an accuracy of 1%; if the accuracy of the ADC needs to be higher, resistors with an accuracy of 0.5% are recommended.
 - GNSS function of the module is optional.
 - If both GNSS and analog audio input function are selected, the module requires an external microphone bias circuit. And MICBIAS must be provided with 1.8 V power supply by using a low-noise LDO. Only USIM1 interface is supported on this condition.
 - If GNSS function is not selected but analog audio input function is needed, the module requires no external microphone bias circuit. And dual USIM cards are supported in this situation.
 - PCM, I2C and analog audio functions are all optional.
 - All GND pins should be connected to the ground, and unused and RESERVED pins are kept floated.
 - Ensure there is a complete reference ground plane below the module, and the ground plane should be placed close to the module layer as possible. Other traces cannot be routed on the first layer below the module, at least four-layer board design is recommended.

Quectel Wireless Solutions			
PROJECT	EC800M-CN	VER	1.0
DRAWN BY	Kelly WANG	CHECKED BY	Tik HUANG
DATE	Tuesday, September 20, 2022	SHEET	3 OF 13

MCU Interface



NOTE:

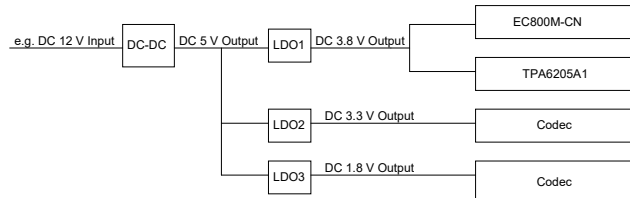
- U0401 represents your MCU. The power domain of GPIO interfaces of the module is 1.8 V. If the power domain of GPIO interfaces of U0401 is also 1.8 V, then the related level-shifting circuit is not needed.
- The USB interface of the module can only serve as a slave device and supports full-speed and high-speed modes of USB 2.0. To communicate with the USB interface, MCU needs to support USB host mode or OTG function.
The USB_VBUS pin of the module should be powered by an external power system for USB detection, and VBUS_CTRL is used to turn on/off the USB_VBUS power supply.
- It is recommended to select the GPIO pins which are at low level by default of MCU as the control pins for PWRKEY and RESET_N of the module. Please ensure that the load capacitance does not exceed 10 nF on PWRKEY and RESET_N pins.

Quectel Wireless Solutions			
PROJECT	EC800M-CN	VER	1.0
DRAWN BY	Kelly WANG	CHECKED BY	TIM HUANG
DATE	Tuesday, September 20, 2022	SHEET	4 OF 13

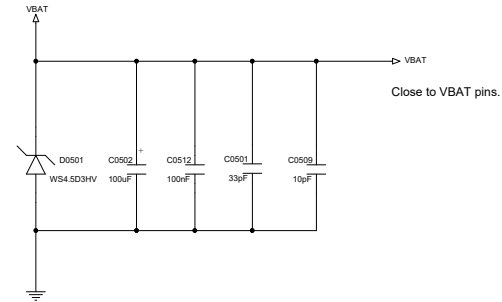
Power Supply Design

DC-DC Application

When the input voltage is above 7.0 V, use a DC-DC converter to convert the high input voltage to a 5.0 V output, and then use LDOs to convert it to 3.8 V, 3.3 V and 1.8 V to power the module, audio PA and Codec up. The supply current of the module must meet 2.0 A.



VBAT Design

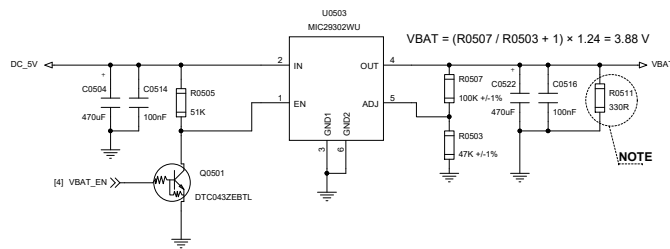


NOTE:

1. The power supply should be able to provide sufficient current up to 2.0 A for the module.
2. The width of VBAT trace should be not less than 2 mm.
3. The typical operating voltage of VBAT is 3.8 V.

LDO Application

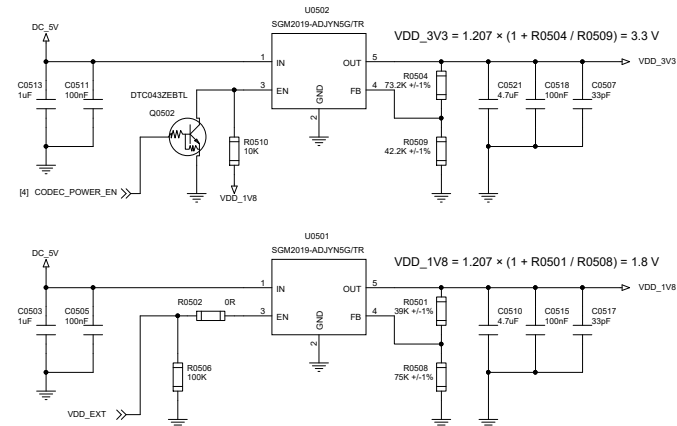
When the input voltage is below 7.0 V, use an LDO to convert the input voltage to 3.8 V.



NOTE:

The recommended load current should be larger than 10 mA.

Power Supply for Codec



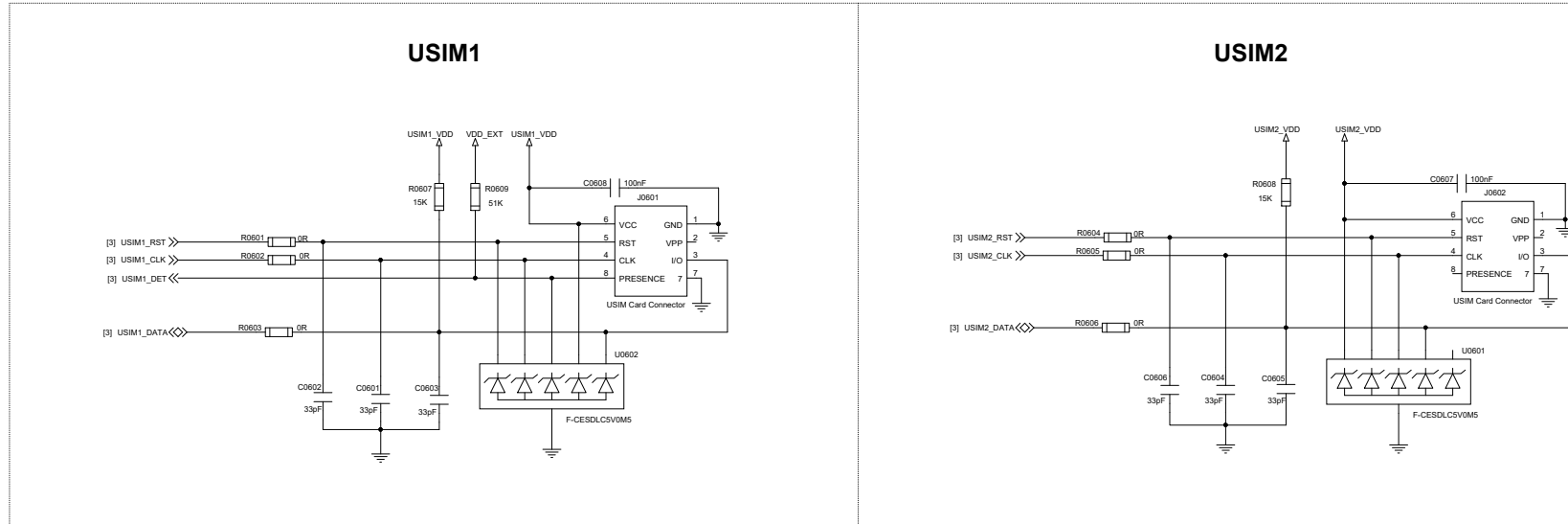
NOTE:

1. VDD_EXT and CODEC_POWER_EN are used to turn on/off VDD_1V8 and VDD_3V3 respectively.
2. The following power-up/down sequences should be followed to ensure the audio codec works normally.
 Power-up sequence: power up VDD_1V8 first, and then VDD_3V3.
 Power-down sequence: power down VDD_3V3 first, and then VDD_1V8.

Quectel Wireless Solutions

PROJECT	EC800M-CN	VER	1.0
DRAWN BY	Kelly WANG	CHECKED BY	TIM HUANG
DATE	Tuesday, September 20, 2022	SIZE	A2
		SHEET	5 OF 13

USIM Interfaces Design



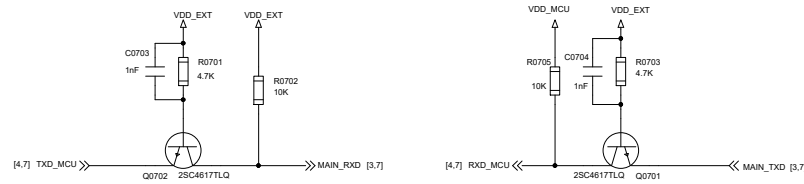
NOTE:

1. U0601 and U0602 are recommended to be used to offer good ESD protection, and the parasitic capacitance should be less than 15 pF.
2. The pull-up resistors R0607 and R0608 can improve anti-jamming capability, and should be placed close to the USIM card connector.
3. R0601–R0606 are used for debugging, and C0601–C0606 are used for filtering out RF interference.
4. The capacitance of C0607 and C0608 should be less than 1 μF and they should be placed close to the USIM card connector.
5. If GNSS function is selected, only USIM1 interface is supported. If GNSS function is not selected, dual cards are supported.

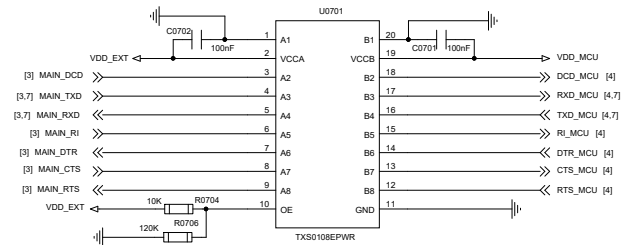
Quectel Wireless Solutions		
PROJECT	EC800M-CN	VER 1.0
DRAWN BY	Kelly WANG	CHECKED BY
		TIM HUANG
DATE	Tuesday, September 20, 2022	SHEET 6 OF 13

UART Interface Design

UART Level-shifting Circuit - Transistor Solution



UART Level-shifting Circuit - IC Solution



NOTE:

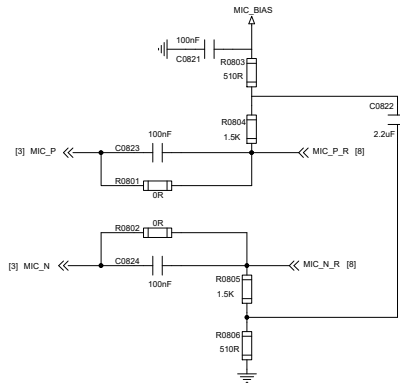
1. There are two level-shifting solutions: transistor solution and IC solution, and it is recommended to select the latter one.
2. The power supply of TXS0108EPWR's VCCA should not exceed that of VCCB. For more information, please refer to the datasheet of TXS0108EPWR.
3. The transistor solution is not suitable for applications with high baud rates exceeding 460 kbps. The capacitors C0703 and C0704 of 1 nF can improve the signal quality.
4. MAIN_RTS and MAIN_DTR level-shifting circuits are similar to that of the MAIN_RXD.
MAIN_CTS, MAIN_RI and MAIN_DCD level-shifting circuits are similar to that of the MAIN_TXD.

Quectel Wireless Solutions		
PROJECT	EC800M-CN	VER 1.0
DRAWN BY Kelly WANG	CHECKED BY Tie HUANG	SIZE A2
DATE Tuesday, September 20, 2022	SHEET	7 OF 13

Analog Audio Design

NOTE1

Microphone Bias Circuit

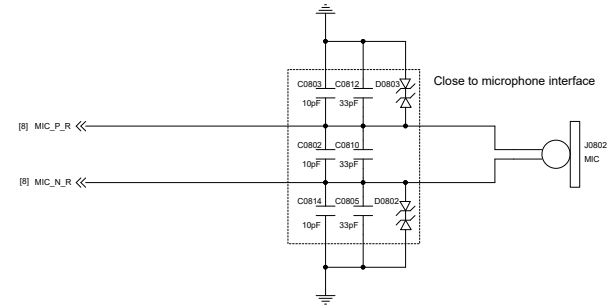


Case	C0821/C0822/C0823/C0824 R0803/R0804/R0805/R0806	R0801/R0802
External microphone bias circuit	M	NM
Without external microphone bias circuit	NM	M

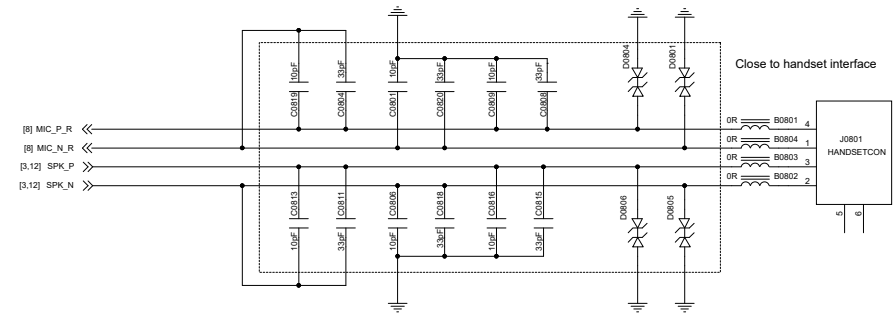
NOTE:

- The analog audio function is optional.
 - If analog audio function is selected and GNSS function is also needed, the analog audio input interface requires an external microphone bias circuit. MICBIAS must be provided with 1.8 V power supply by using a low-noise LDO.
 - When GNSS function is not needed, the analog audio input interface requires no external microphone bias circuit.
- Both the MIC and SPK signal traces need to be routed as differential pairs.
- All MIC and SPK signal traces should be surrounded with ground on the layer and ground planes above and below, and far away from noises.
- In the audio design, you can choose either the analog audio or the codec. It is not necessary to select both.
- It is recommended to use 10 pF and 33 pF capacitors to filter TDD noise.

Microphone Application



Handset Application

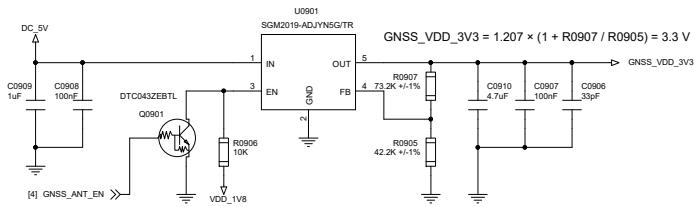


Quectel Wireless Solutions

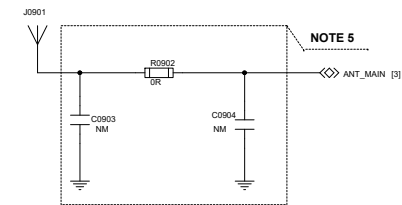
PROJECT	EC200M-CN	VER	1.0
DRAWN BY	Kelly WANG	CHECKED BY	TIM HUANG
DATE	Tuesday, September 20, 2022	SHEET	8 OF 13

Antenna Interface Design

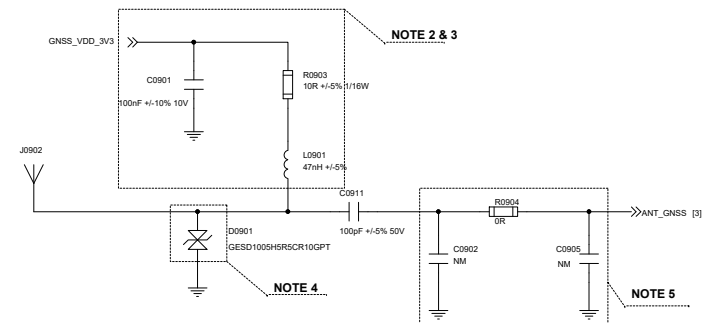
GNSS Active Antenna Power Supply



Main Antenna Design



GNSS Antenna Design



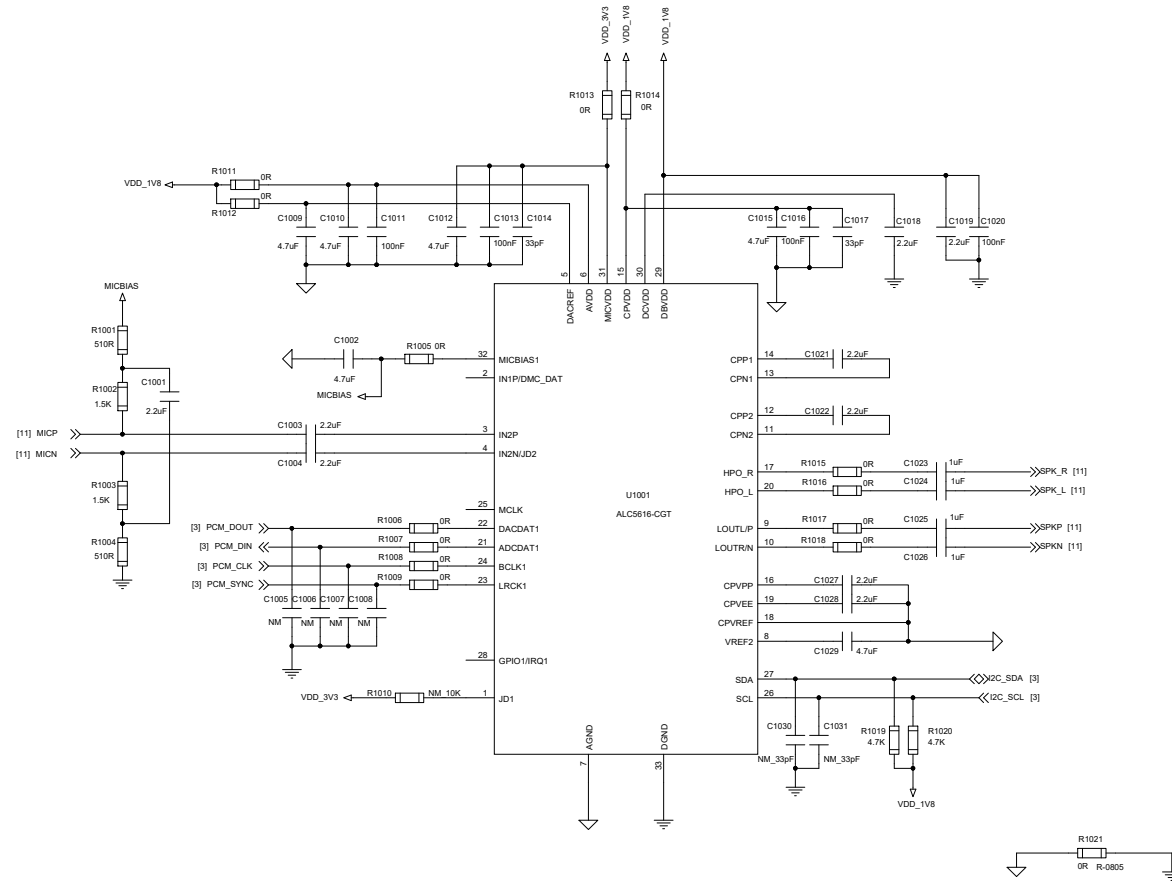
NOTE:

- GNSS function is optional to the module. Thus, the GNSS antenna design of this page is only applicable to the variant with built-in GNSS function.
- The active antenna uses an LDO for power supply, and when using passive antenna, the VDD circuit is not needed.
- L0901, R0903, C0901 are recommended to be placed close to the RF traces in layout design.
- The junction capacitance of the antenna interface ESD protection component is recommended to be less than 0.05 pF.
- Reserve a Π -type matching circuit at antenna interface.
- The single-ended impedance of the RF antenna is 50 Ω , and length should be as short as possible.
- The external active antenna power supply voltage range is from 2.8 V to 4.3 V, and the typical value is 3.3 V.
The power supply voltage can be designed according to the power supply requirements of the selected active antenna.

Quectel Wireless Solutions

PROJECT	EC300M-CN	VER	1.0
DRAWN BY	Kelly WANG	CHECKED BY	TIM HUANG
DATE	Tuesday, September 20, 2022	SIZE	A2
		SHEET	9 OF 13

Audio Codec Design (ALC5616)

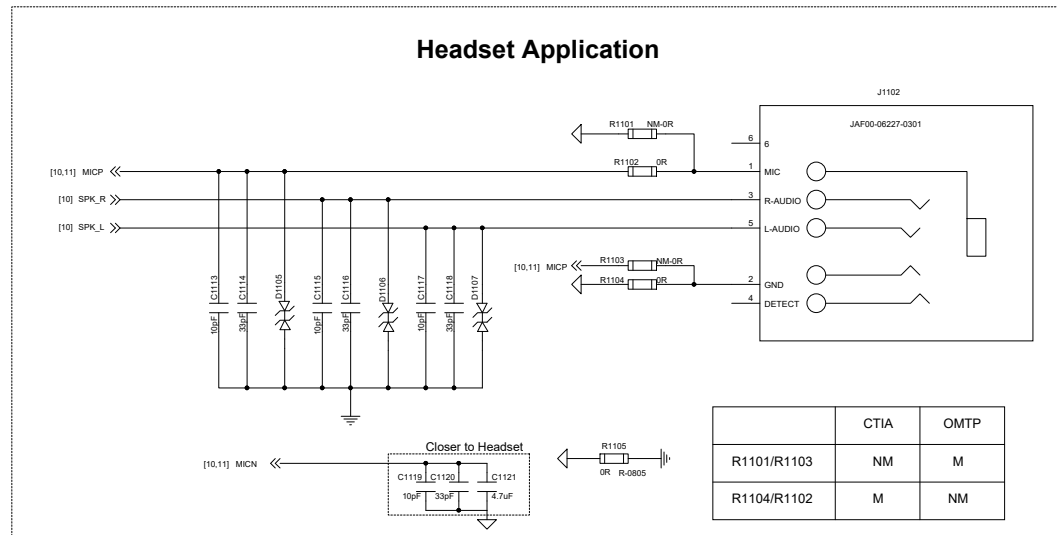
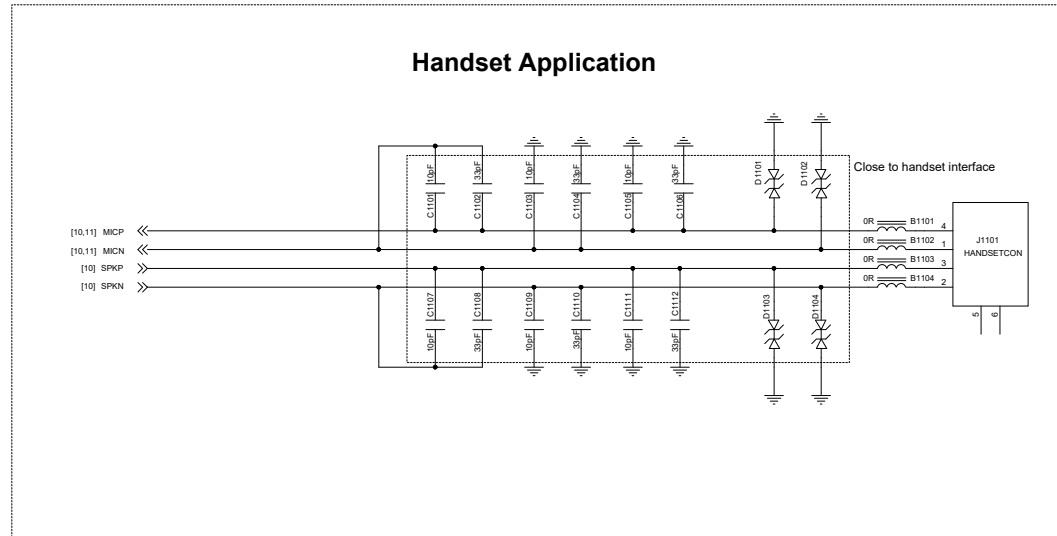


NOTE:

1. ALC5616 power-up sequence: DBVDD/I2C pull-up power/AVDD/DACREF/CPVDD → MICVDD → software initialization.
2. ALC5616 power-down sequence: disable Codec function by software → MICVDD → DBVDD/I2C pull-up power/AVDD/DACREF/CPVDD.
3. The module will automatically initialize the Codec via I2C interface after it is turned on successfully, so all power supplies for the Codec need to be powered up before that.
4. Please pay attention to the distinction between analog ground and digital ground. The analog ground and digital ground need to be connected with a 0 Ω resistor packaged as R-0805. For more details, please refer to sheet "Audio Codec Interface Design".
5. For more details, please refer to the datasheet of ALC5616.
6. The analog audio function is optional. If those interfaces are not used, keep them floated.

Quectel Wireless Solutions			
PROJECT	EC300M-CN	VER	1.0
DRAWN BY	Kelly WANG	CHECKED BY	Tie HUANG
DATE	Tuesday, September 20, 2022	SHEET	100% 13

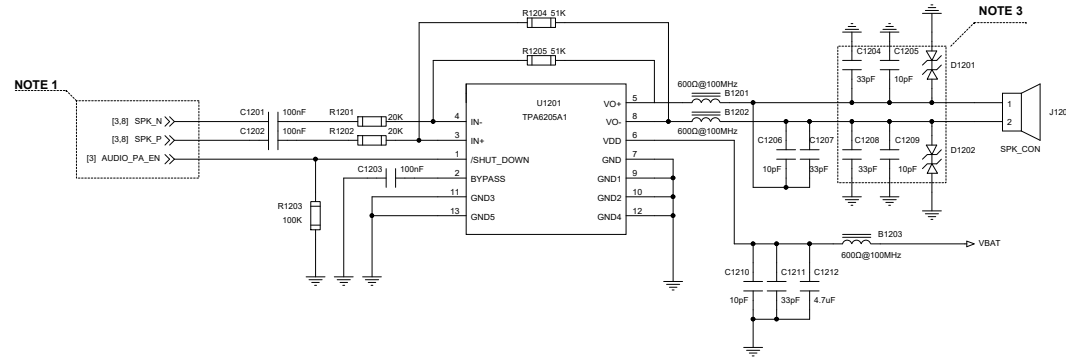
Audio Codec Interface Design



NOTE:

1. The Codec analog output can drive handset and headset. For larger power loads such as loudspeaker, an audio power amplifier should be added in the design.
2. In handset applications, route the MIC and SPK signal traces as differential pairs respectively.
3. In headset applications, route the MIC signal traces as a differential pair.
4. All MIC and SPK signal traces shall be surrounded with ground on the layer and ground planes above and below, and far away from noises such as clock and DC-DC signals.
5. Please pay attention to the distinction between analog ground and digital ground. The analog ground and digital ground need to be connected with 0 Ω resistor packaged as R-0805 (short-circuit through single point grounding).
6. The analog audio function is optional. If those interfaces are not used, keep them floated.

Analog Audio Design (Audio Power Amplifier)



NOTE 1

[3..8] SPK_N >>
[3..8] SPK_P >>
[3] AUDIO_PA_EN >>

NOTE 3

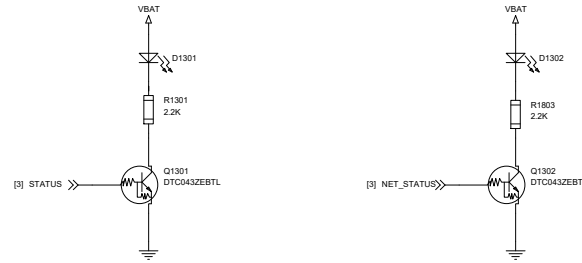
NOTE:

1. SPK_P and SPK_N are differential output channels that can be used for an external audio power amplifier.
It is recommended to use MAIN_DCD of the module to control the enable pin of the audio power amplifier to eliminate POP. For more information about AUDIO_PA_EN, please contact Quectel Technical Support.
2. The power amplifier above is for reference only. Select the appropriate audio power amplifier according to actual needs.
3. Filter capacitors and ESD protection components should be placed close to the loudspeaker.
4. The selection of ESD protection components is related to the selection of audio power amplifier. Please ensure that the output voltage of audio power amplifier is within the maximum reverse working voltage range of ESD protection components under normal working condition, so as to avoid damage to ESD protection components.
5. The analog audio function is optional. If those interfaces are not used, keep them floated.

Quectel Wireless Solutions		
PROJECT	EC800M-CN	VER 1.0
DRAWN BY Kelly WANG	CHECKED BY Tie HUANG	SIZE A2
DATE	Tuesday, September 20, 2022	SHEET 12 OF 13

Other Designs

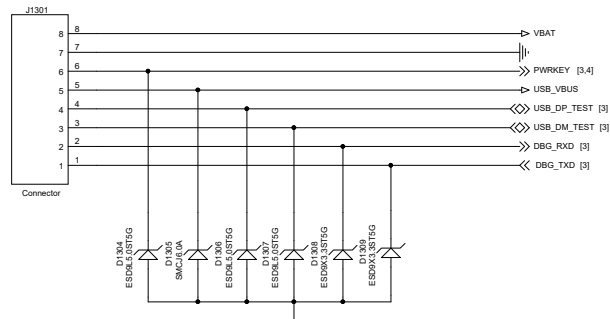
Indicators



NOTE:

1. For more details about STATUS and NET_STATUS, please refer to the hardware design document of the module.
2. If the low current consumption is required when your device is in sleep mode, replace the power supply VBAT of the STATUS and NET_STATUS indicators with the external controllable ones, which can be turned off when the module is in sleep mode to reduce the power consumption.

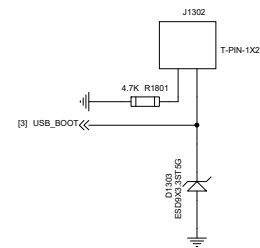
Reserved Test Points



NOTE:

1. Test points for both USB and debug UART interfaces are reserved for catching logs.
2. Test points for USB interface can also be reserved for firmware upgrade.
3. The junction capacitance of the ESD protection components on USB data lines should be less than 2 pF.
4. The debug UART interface supports 1.8 V power domain, and a voltage-level translator should be used if the power domain of your application is 3.3 V.

USB_BOOT Interface



NOTE:

1. Be sure to reserve the USB_BOOT interface design and test points.
2. Before module is turned on, pull down USB_BOOT to GND, and the module will enter emergency download mode when it is turned on. In this mode, the module supports firmware upgrade over USB interface.
3. The 6.0.1 and above version of Qflash tool must be used for firmware upgrading.

Quectel Wireless Solutions

PROJECT	EC200M-CN	VER	1.0
DRAWN BY	Kelly WANG	CHECKED BY	TIM HUANG
DATE	Tuesday, September 20, 2022	SHEET	13 OF 13